

# Lateral Compartment Of Leg

Dr Kaweri Dande

Resident

Department Of Anatomy

King George Medical University, Lucknow, Up

# Disclaimer

- The presentation includes images which are either hand drawn or have been taken from google images or books.
- They are being used in the presentation only for educational purpose.
- The author of the presentation claims no personal ownership over images taken from books or google images.
- However, the hand drawn images are the creation of the author of the presentation

# Learning objectives

- By the end of this teaching session all the students must be able to correctly:-
- Describe and demonstrate the location of anterolateral compartment of leg
- Enumerate the muscles and describe their attachment
- Describe the nerve supply of lateral compartment of leg
- Demonstrate the action of muscles of lateral compartment of leg

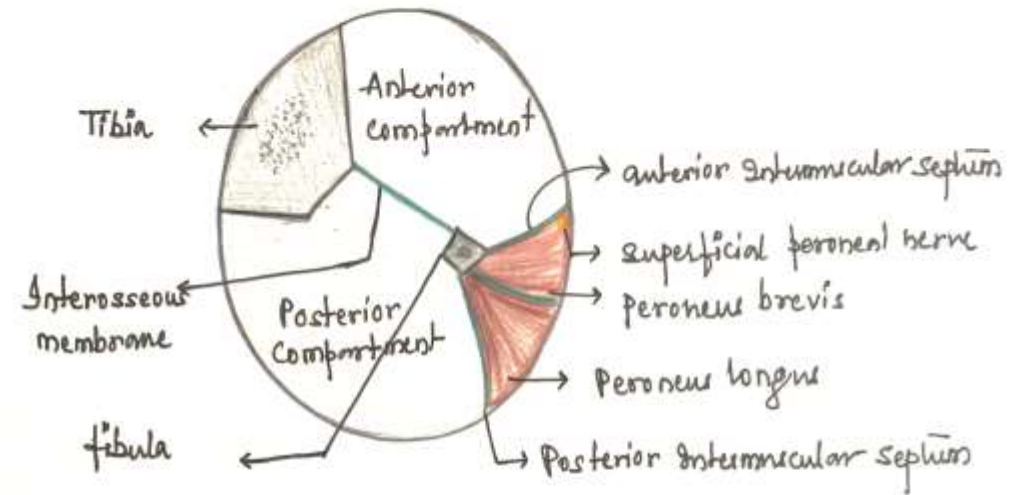
# Preface

- Peroneal Retinacula: Superior And Inferior
- Muscles: Peroneus/ Fibularis Longus  
Peroneus/Fibularis Brevis
- Nerve: Superficial Peroneal Nerve
- Vessels: Peroneal Artery, Small Saphenous Vein
- Evertors Of Foot



# Boundary

- Anteriorly: anterior intermuscular septum
- Posteriorly: posterior intermuscular septum
- Medially: lateral surface of fibula
- Laterally: deep fascia of leg



Transverse section of right leg

# Superior Peroneal Retinaculum

- Deep fascia

- Location

Behind lateral malleolus

- Attachment

Anteriorly: posterior margin of lateral malleolus

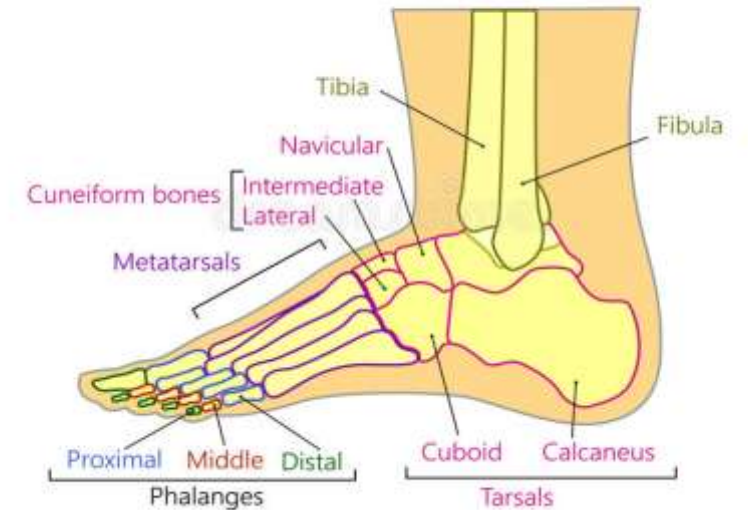
Posteriorly: lateral surface of calcaneum

Superficial transverse fascial septum



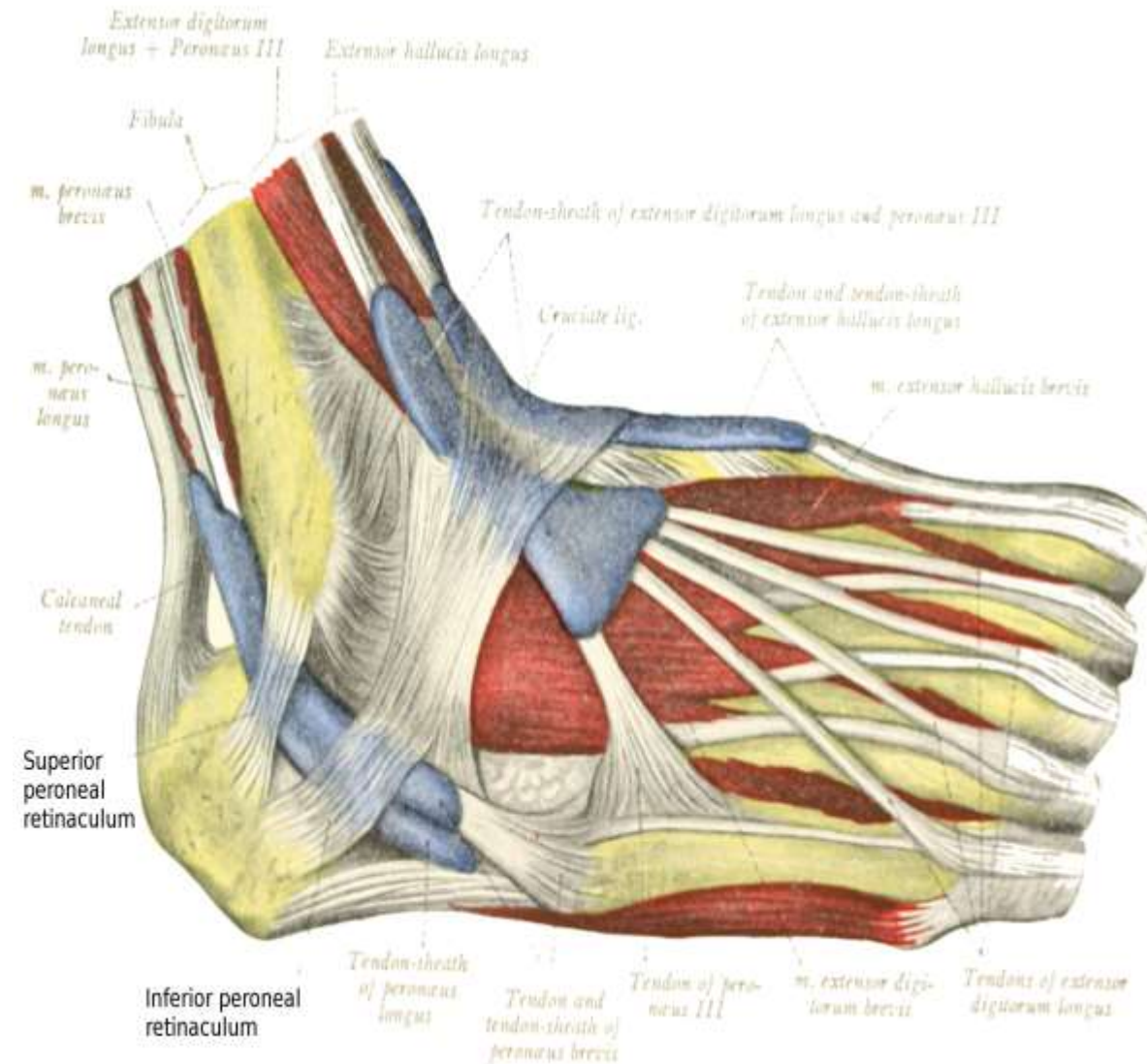
BONES OF THE HUMAN FOOT

Lateral view



# Inferior Peroneal Retinaculum

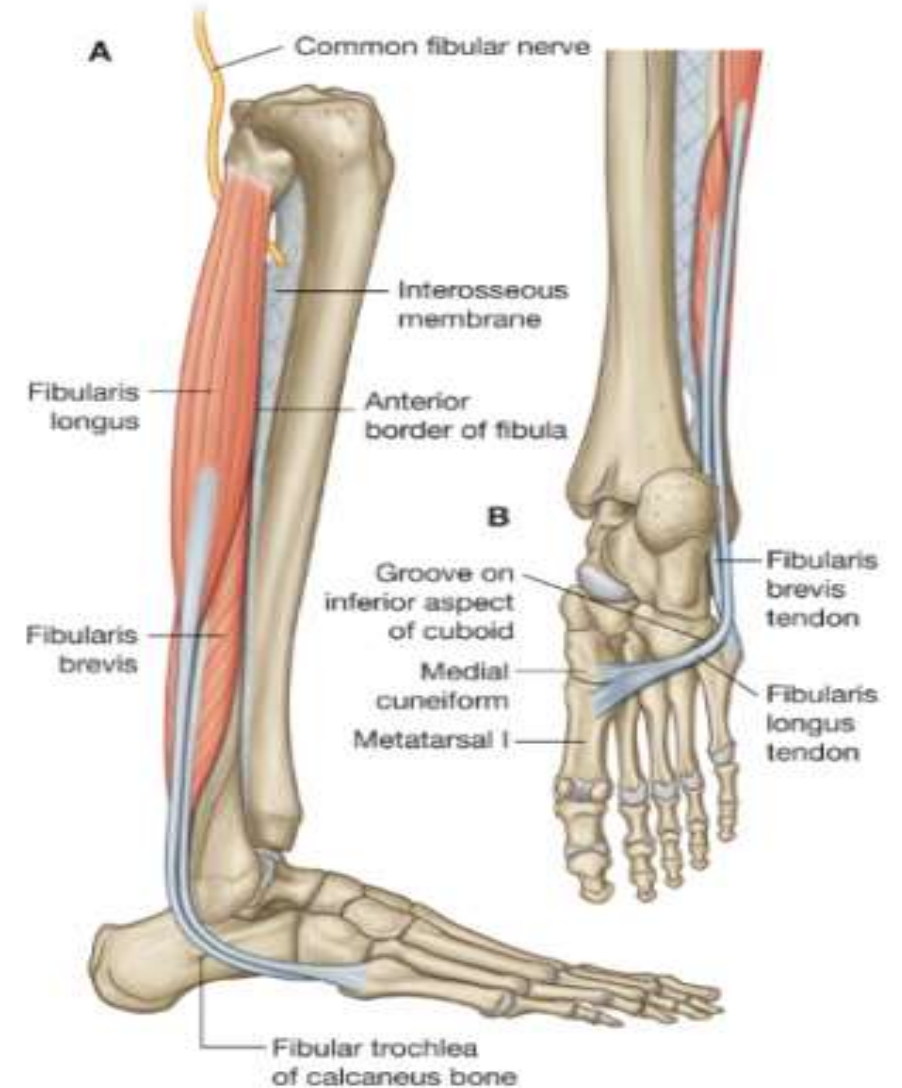
- Deep fascia
- Location  
Anteroinferior to lateral malleolus
- Attachment  
Superiorly : superior surface of calcaneum  
Inferiorly: lateral surface of calcaneum





# Peroneus/ Fibularis Longus

- Superficial to peroneus brevis
- Origin
  - upper 2/3<sup>rd</sup> lateral surface of shaft of fibula
  - Head of fibula
  - Occasionally lateral tibial condyle
- Insertion:
  - medial cuneiform
  - Base of metatarsal 1

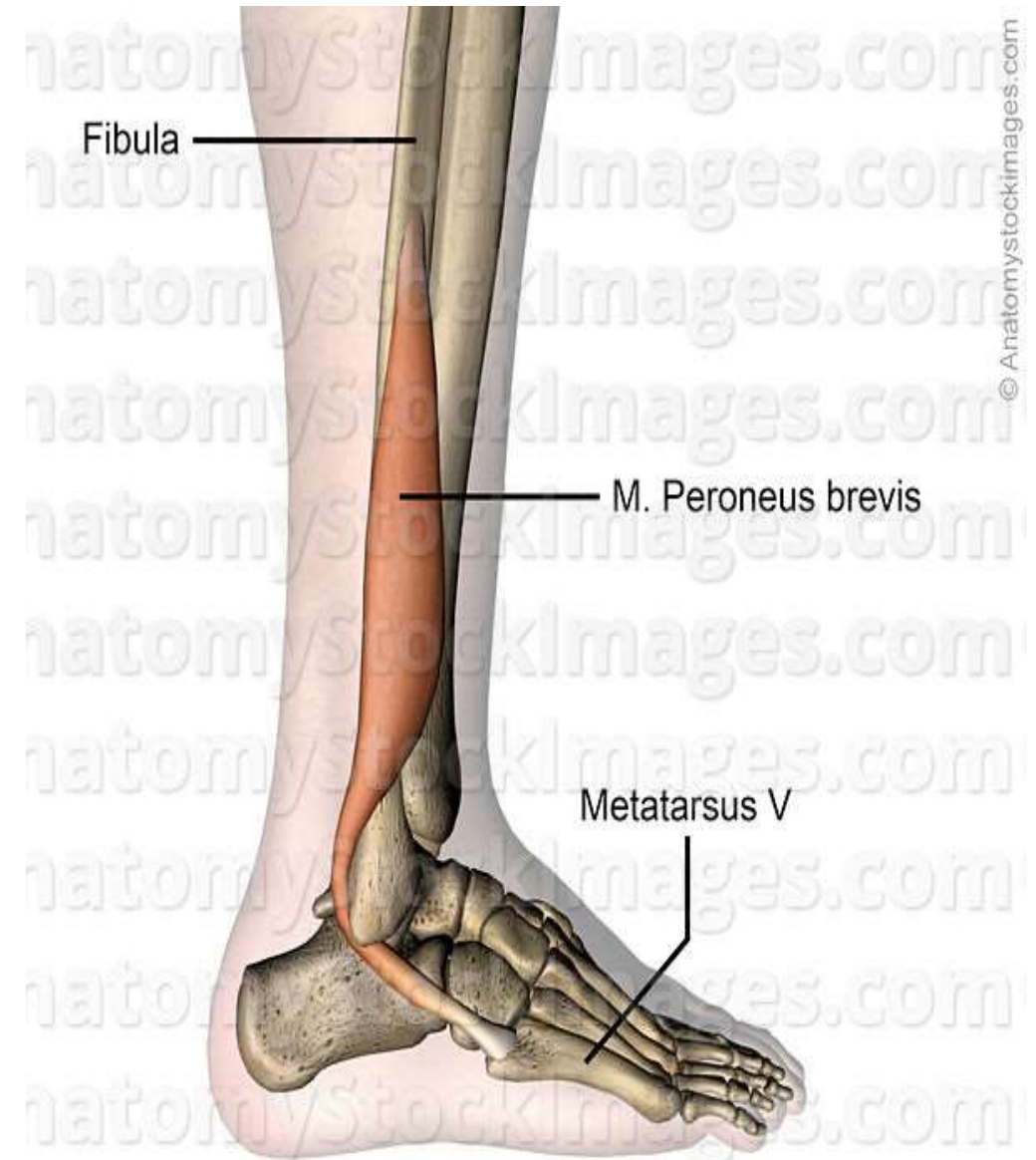




# Peroneus/ Fibularis Brevis

- Deep to peroneus longus
- Origin: anterior half of middle 1/3<sup>rd</sup>  
lower 1/3<sup>rd</sup> of lateral surface of fibula  
anterior & posterior intermuscular septa
- Insertion: base of metatarsal v

Action: eversion of foot



# Innervation And Actions Of Muscles

- Innervation: superficial peroneal nerve

- Actions

Peroneus longus: eversion and plantarflexion of foot  
supports arches of foot

Peroneus brevis: eversion of foot



(b) Inversion



(c) Eversion

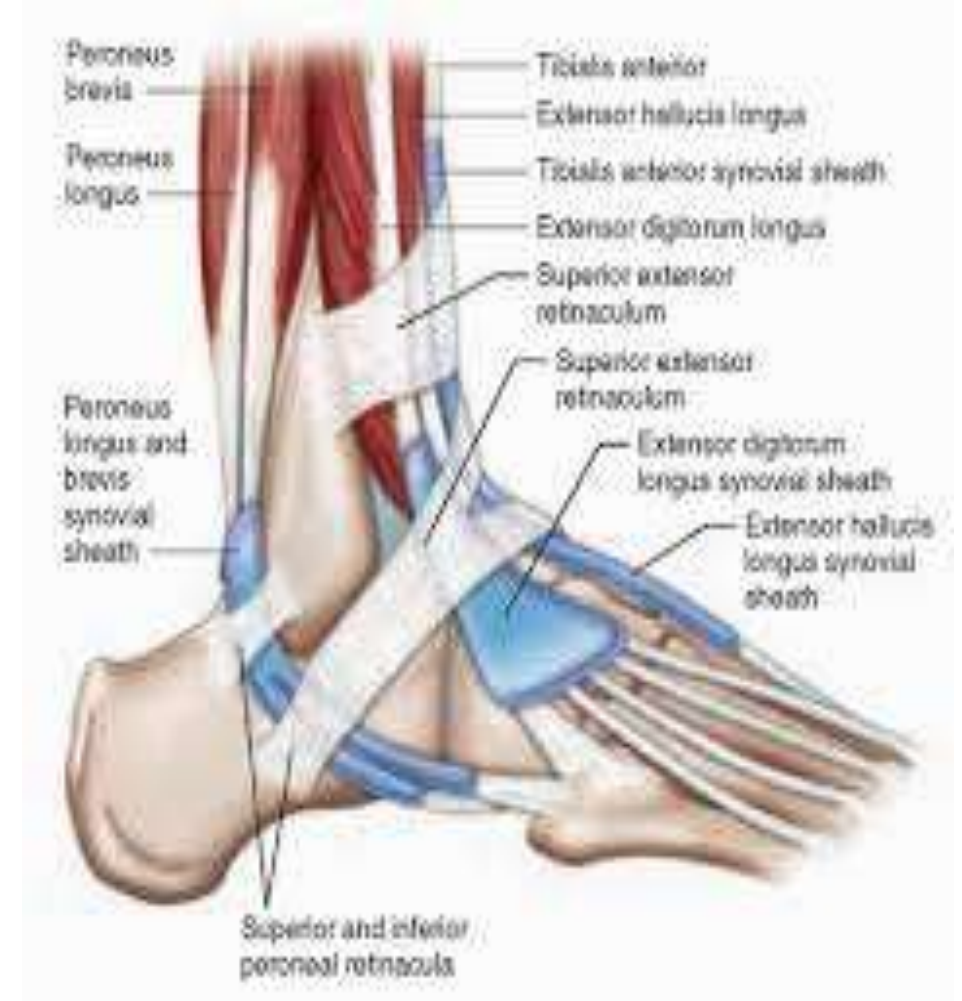
# Peroneal Retinaculum

## *Superior peroneal retinaculum*

- both tendons common synovial sheath

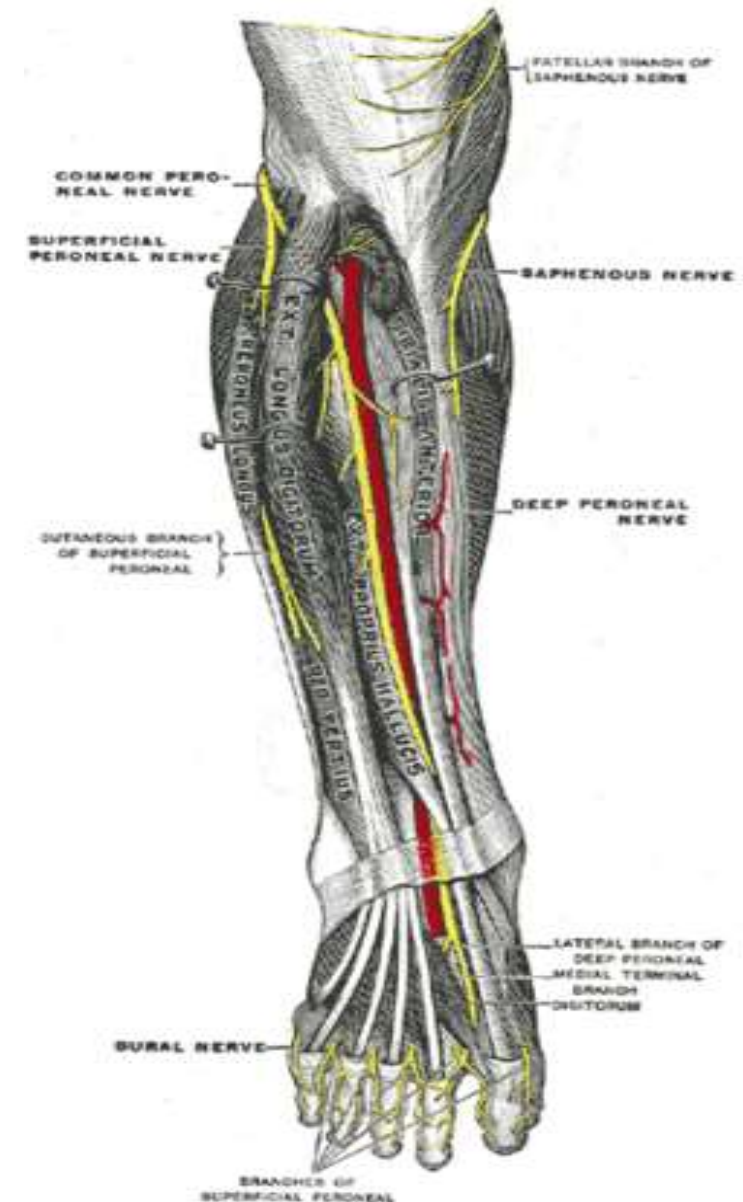
## *Inferior peroneal retinaculum*

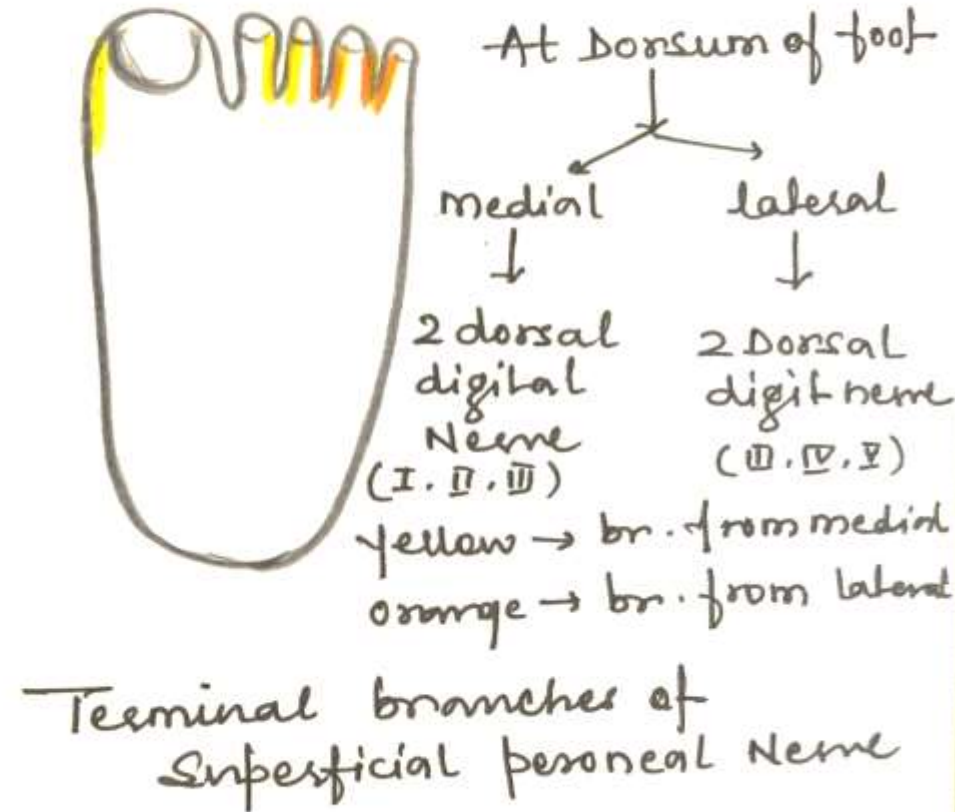
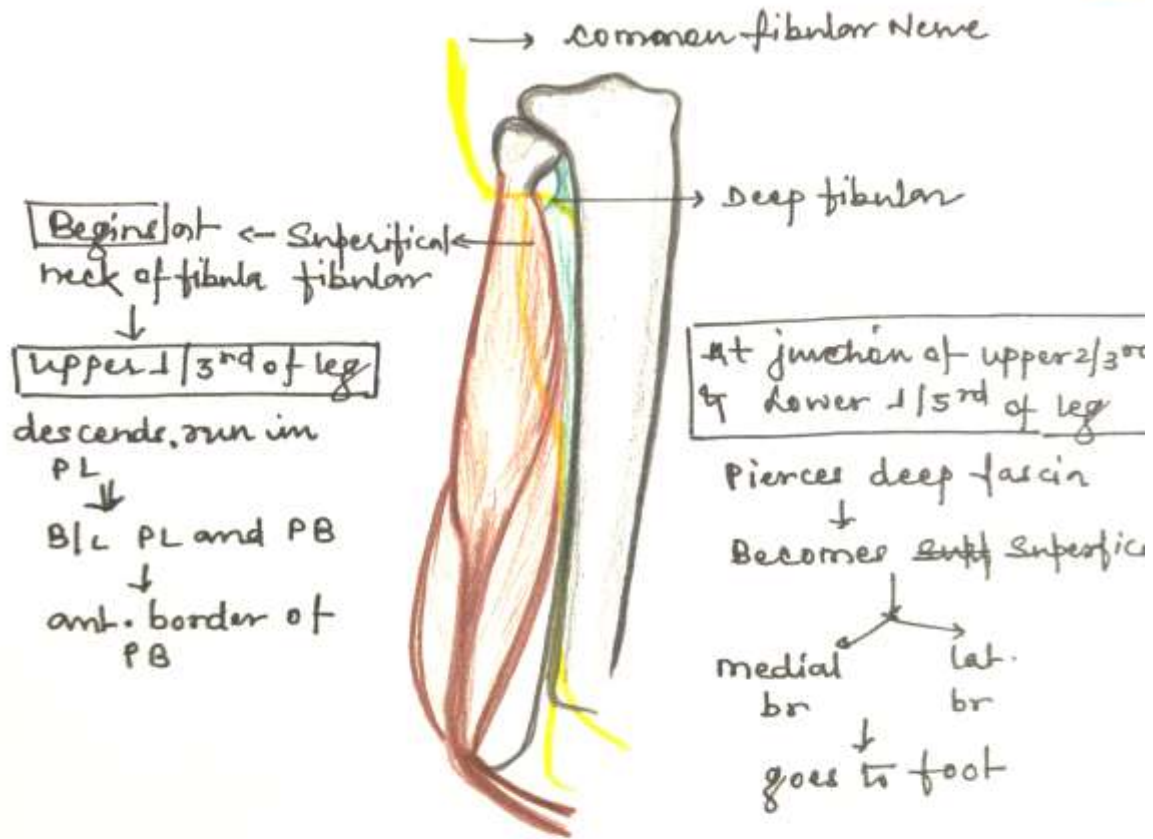
- Enclosed separate synovial sheath
- superior compartment: Peroneus brevis
- inferior compartment: Peroneus longus



# Superficial Peroneal Nerve

- L5, S1, S2
- Branch of common peroneal nerve
- Begins : lateral side of neck of fibula
- Terminate: medial branch  
lateral branch
- Branches- muscular, cutaneous, communicating  
medial and lateral branch





Course of superficial peroneal nerve

# Applied Anatomy

- Sensory loss
- Loss of eversion



If you want to be  
more powerful in  
life, educate  
yourself. Its that  
simple.

*Thank you*